

COMPANY PROFILE.



SINCE 1993.

ISO 9001:2015 Certified Company.



About us

Core Business

Our Vision, Mission and Goals.

Our Policy and Core Values .

Our Growth

List Of Machineries

Our Precious Clients.

About us

We are a 28 Year Old ISO Certified and BIS Approved Organization.

We are into Manufacturing of High Precision Progressive tools, Precision Sheet Metal Components, Motor Core Laminations with Skew, High Precision Interlock stampings and **CRGO** Laminations for Transformers.

Sectors we Cater.

- Automotive
- Electrical
- Electronic
- Pharmaceutical
- Defence
- Electric Vehicle
- And Transformer Industry.

The new division HI-TECH Core laminations (HTCL) will undertake manufacturing of :

CRGO Cut to Size Laminations for distribution transformers & Power transformer manufacturers in India as well as worldwide.

This project will be led by :

Mr. Swapnil Kurlekar & Team.

(Partner HI-TECH TOOLS INDIA)



Company History.

HI-TECH TOOLS, was established in 1993, specializes in precise sheet metal parts for electronics and electro-mechanical industrial sectors. This was proprietorship firm conceptualized by Mr. Sunil D. Kurlekar. Initially the total workable area was 1000sq ft, wherein maximum development was done in the field of tool designing. Making tremendous changes in our tool design and making new improvements is our key to success. In view of the changing markets & innovation in the industry and to cater the requirements of our esteemed clients a new factory was established in Vasai, which has an area of 5000sq ft.

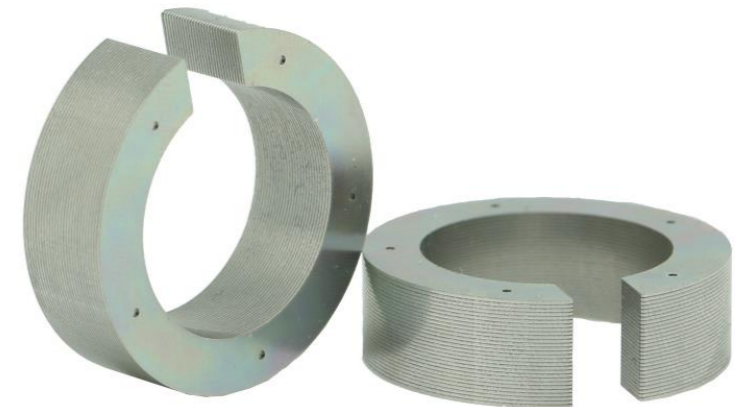
As of today, the company is a Partnership firm since 2012, & the name of our company is changed to HI-TECH TOOLS (INDIA) with two Partners. – Mr. Sunil Kurlekar & Mr. Swapnil Kurlekar.

In 2019 we shifted to our new Unit which is approx. 40000sqft and is our Current Manufacturing Unit.

Today Because of our continuous hard work and dedication, Hi-Tech is capable of handling many high-speed presses & CNC machines. We have 95% In-house facility for our work and our Tool Room is the Backbone of our company.

Team work and dedication helps us lead our way. Involvement with our clients from conception to design and through prototype to finished product, thus ensuring effective solutions achieved to maximum quality and cost effectiveness of the finished product. Our future projects, god willing will exceed the International standards for the years to come...

INTEGRITY, QUALITY, VALUE & SPEED, are our Aggressive Partner for Success!!



Why HI-TECH.

Our Goal is to help our Customers from Proto to Production, we work together for the best Outcome and eventually achieve success in delivering the Best Product. With our designs and Concepts, we can help our customer to get 100% results in prototype tool where they can achieve the final results equivalent to the Production Tool. Our Core Area and Expertise are into Interlock Stampings, We currently make approximately 45 to 50 different types of Laminations. Our Capacity Varies from Diameter 30mm to 250mm.

We have a different perspective towards Prototype Components at a very reasonable Cost and within the reasonable Time.

In Our CRGO Department which is a dedicated department for Transformer Industry, We have the Best Machine for cutting the laminations, Where the length and burr level are controlled within the tolerance to achieve Best results.

We take maximum care at every level and have some defined checkpoints to avoid any damage to the material of our Finished Product.

If necessary we are also capable of Building a core and test it inhouse to give final results (NLL reports) to our Customer and clear all the concerns before delivery.

TBA 400 ecocline – German Make machine is right now only one in Mumbai region.



Our Strength.

- **Best in Quality Products.**
- **On Time Delivery.**
- **Competitive Price.**
- **Customer Relationship.**





To be the most trusted growth partner for our clients by being the one stop manufacturing solutions provider with creative ideas & high end technology for Sheet Metal Parts.



To Contribute Towards Organization's Success and Nations Progress Through Innovation and Technology.



To revolutionize the Stamping Industry by year 2036.

“Currently we produce more than 45 different type of interlock stamping”



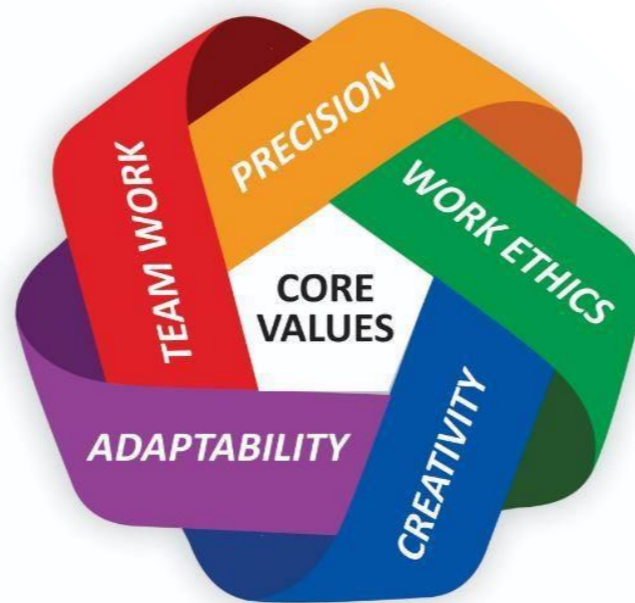
Quality Policy.

Hi-Tech Tools (India) is committed to Satisfying the needs and expectations Of its customers by ensuring Quality, Reliability, Affordability and Trustworthiness Of its Products while complying With Stated and Implied requirements & Continually Improving Its deliverables, Systems, Technology and Enhancing its Knowledge-Capital.



Hi-Tech will strive to be counted as the preferred supplier for Stamping Products Internationally.

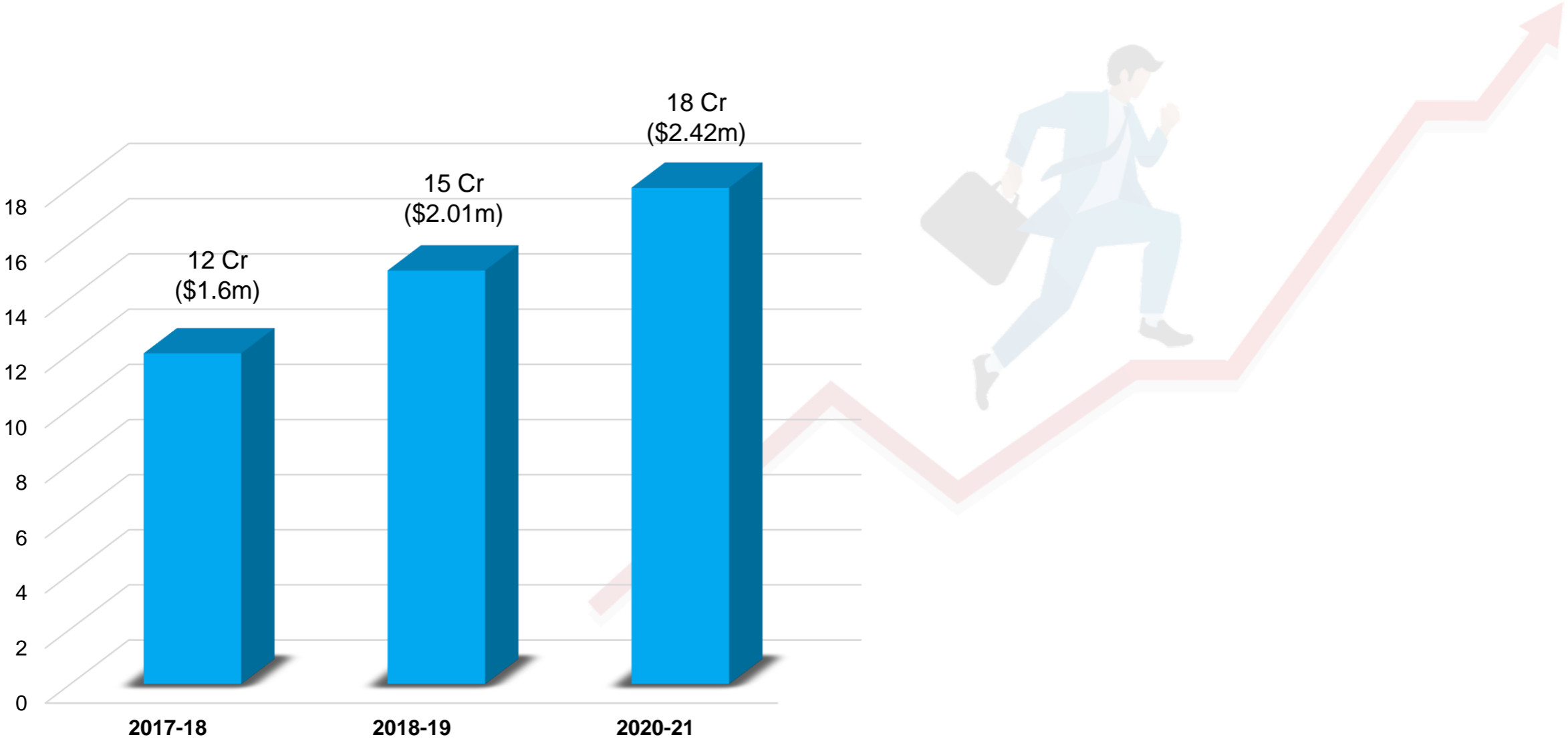
Core Values.



Some Components.



Sales Growth.





Plant 1

- Earlier Our Plant was Of 5000 sqft
- Fully Operational Since 2005.



Plant 2

- Our Current Plant is approx. 40000 sqft
- Fully Operational Since 2019
- Equipped with all the inhouse Facilities
- Will be Dust free Plant as early as possible.
- Capable of storing 2,00,000 liters of rain water with the help of rain water harvesting tech.
- Special material on walls to avoid external heat

List Of Machineries.

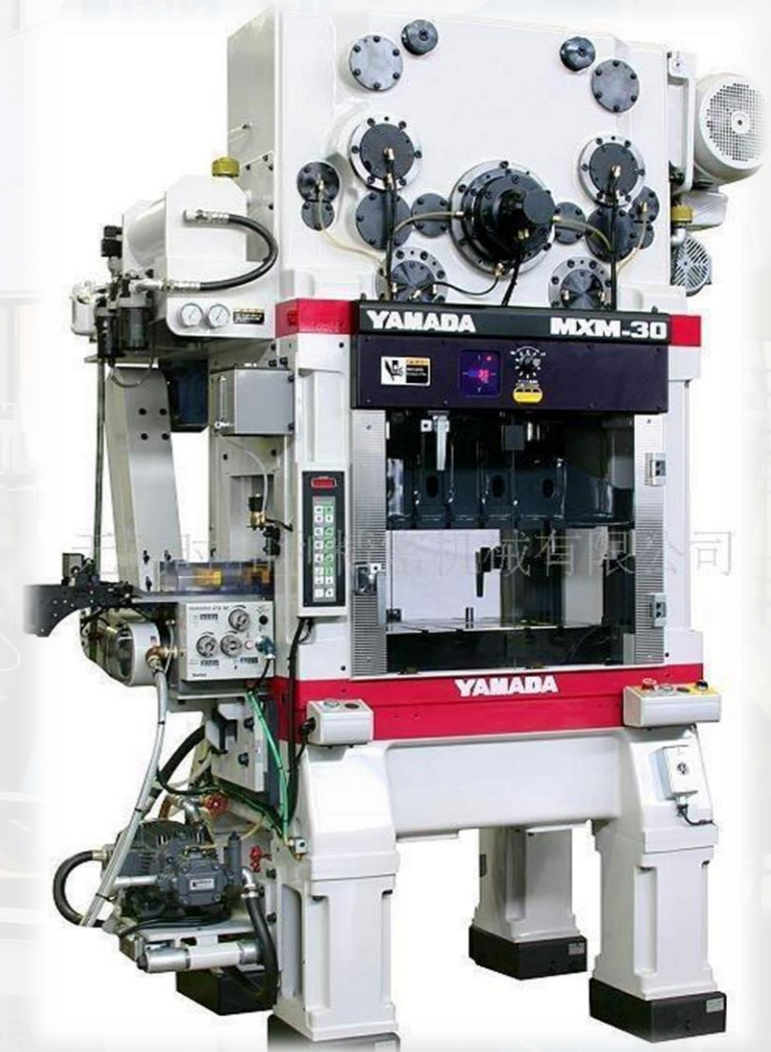
Tool Room.

- Agie Charmillies 240 cc
- Agie Charmillies CUT 300 Wire Cut Machine.(Swiss Made).
- Cheviliar Surface Grinder NC Controlled 400 x 800 Size.
- Cheviliar Surface Grinder NC Controlled 400 x 1000 Size.
- Okamoto Surface Grinder 500 X 1000.
- Lathe Colchester.
- Jones shipman Surface Grinder 1400-E 200 X 600 Size.
- Jones shipman Surface Grinder 200 x 600 Size.(3 no's)



Machines in Press Shop.

- BRUDERER 25 ton.
- Yamada Dobby MXM 40. SPM 200 – 1000
- Yamada Dobby MXM 40L - 2 Units. SPM 200 – 1000
- Fair Oaks 45 Ton SPM 200 – 800
- Fair Oaks 80 Ton – 2 Machines SPM 200 – 800
- Fair Oaks 125 Ton SPM 200 – 800
- Fair Oaks 220 Ton SPM 200 – 800
- Seyi 50 Ton – 200 to 700 SPM.
- Seyi 35 Ton – 200 to 700 SPM - 2 Units.
- Seyi 25 Ton – 200 to 700 SPM.
- Aida 110 Ton with servo feeder
- Aida 80 Ton with servo feeder - 4 Units.
- Hydraulic Machine 15 Ton. - 6 Units from Taiwan
- SEW 35 Ton – 2 Machines
- SEW 45 Ton – 2 Machines
- SEW 63 Ton – 2 Machines
- Komatsu 35 Ton
- Komatsu 45 Ton
- Kyori 25 Ton Highspeed
- Bauter – 63 Ton



CRGO DEPARTMENT.

TBA 400 ECO LINE.

Fully Automatic line from Henrich GEORG – Germany.

Highly efficient and Robust Built Quality. Equipped with dust free Enclosure.

Capabilities.

Width : 40 – 440mm

Length: Up to 2500mm

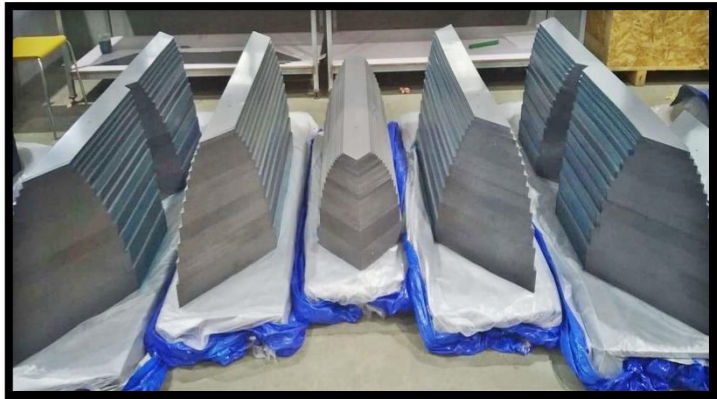
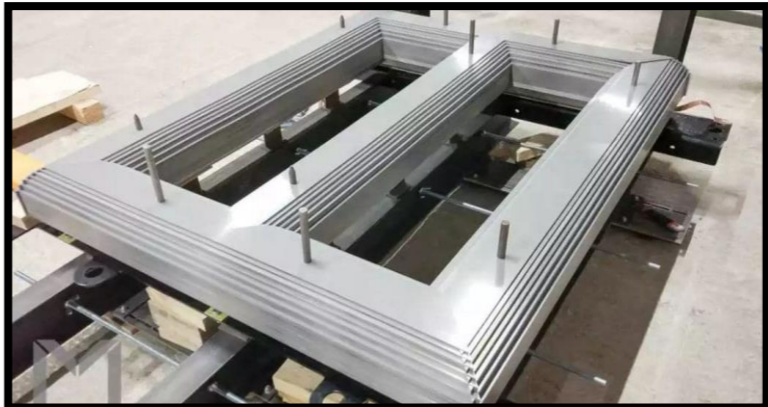


IRON LOSS TESTER



POWER ANALYZER

GLIMPSES OF CRGO DEPARTMENT.

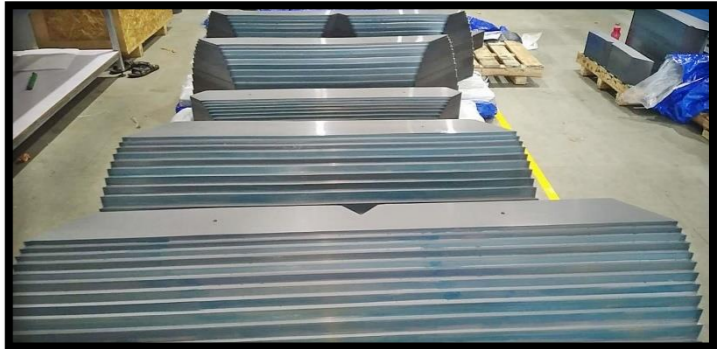


S.O.P FOR IRON LOSS TESTER (W/KG)

SET THICKNESS TO ZERO	CLEAN THE SURFACE OF SAMPLE	SET THICKNESS AS PER REQ.	PLACE THE WEIGHT ON THE PRISM
SET FLUX DENSITY.	CLEAN THE PRISM SURFACE	PLACE THE PRISM ON THE SURFACE	FINAL READING

DEFECT TYPES

Dark	Dent Mark	Fold Mark	White Spots
Color Variation			
Black Spots	Damaged Edge	Side Cuts	Rust Marks



63KVA To 1MVA Range GLIMSES



Our Esteemed Clients.

TOSHIBA

federal
power transformers

ML Permanent Magnets Ltd.

POWER

JFE

Portescap

TELAWNE
POWER EQUIPMENTS
PRIVATE LIMITED

JAY PRECISION
PRODUCTS
INDIA PVT. LTD.

DANAHER

FAIRDEAL
Electricals & Engineering P Ltd

ATL

JOLLY

Raychem RPG
ENGINEERING GROWTH. PIONEERING EXCELLENCE

VENKAT
SWITCHGEARS

MECHTEX
Driving Innovation

SSE
SHIRDI SAI ELECTRICALS LTD

ROTEX
Engineering For The Future

SPT SPECIALTY
PRODUCT
TECHNOLOGIES

POWER
IGNITION

Delrin

SHREE KRISHNA
CONTROLS PVT LTD



Continental Controls Ltd.

RICHFIELD GROUP
A Name To Reckon With In HVAC



aczel
...Since 1986

BAYAREA
TERMINALS LLP.



Impossible Only Takes Little Longer..

HI TECH TOOLS INDIA

**Plot no 2.Survey no 44,Opp Abhilasha industrial estate,
NH no 8,opp Golden Chariot hotel, Bhootpada,
Near Jolly company, Vasai east 401 208,
Dist Palghar, Maharashtra**